



Dupli-Color®

PRODUCT CATALOG





**BATTERY CLEANER &
BATTERY PROTECTOR**



CUSTOM WRAP LENS TINT



**ENGINE ENAMEL
FLAT BLACK**



**UNIVERSAL
TOUCH-UP**

**Yes You Can ...
In Your Garage,
with new products from**

Dupli-Color®

TABLE OF CONTENTS

PRIMERS & PREP 2	PROTECTION 18	KRYLON 32
Filler Primer2	Bed Armor™18	COLORmaxx™32
Self-Etching Primer2	Truck Bed Coating Spray Gun18	Paints & Primers.....32
Sandable Primer.....2	Bed Armor Aerosol	Fusion All-In-One™
Primer Sealer2	Camouflage18	Paint + Primer.....33
2-in-1 Hi-Build Primer2	Clear Truck Bed Coating.....19	Camouflage33
Adhesion Promoter2	Truck Bed Coating19	High Heat34
Grease and Wax Remover3	Undercoating.....20	Appliance Epoxy34
Paint Stripper3	GENERAL PURPOSE..... 21	Clear Wood Finishes34
Rust Fix3	Premium Lacquer21	Lacquer Spray34
Battery Cleaner.....3	Premium Enamel21	Farm and Implement Paint35
Battery Protector.....3	Hi-Build Fleet Coating21	Chalkboard Paint.....36
		Metallic Paint.....36
		Fluorescent Paint36
		Snap & Spray Gun.....36
		Professional Paints.....37
		Marking Paint & Equipment.....37
		Professional Striping Paint & Equipment.....37
TOUCH-UP 4	PROFESSIONAL COATING 21	
Scratch Fix® All-in-1™4	Rust Barrier Rust Preventive Coating21	
Universal Touch-Up4		
Scratch Seal		
Clear Sealer Pen4		
Perfect Match®5		
	SPECIALTY CHEMICALS 22	
	Specialty Reducer22	
ENTHUSIAST 6	OMNI-PAK 22	
ColorShop® Finish System6	Filling Stations22	
ColorShop Clear Options:	Fill-One Cans.....22	
Gloss or Matte.....6	Cans22	
Prism Multi-Color Clear and Metallic Clear.....6		
ColorShop Candy Coat7	VHT® 24	
Engine Enamel with Ceramic.....8	FlameProof Coating24	
Caliper Paint.....9	Engine Metallic™25	
Caliper Paint Kit.....9	Wrinkle Plus Coatings25	
Wheel Coating10	Caliper Paint.....26	
Hyper Silver Coating10	Roll Bar & Chassis Paint.....26	
Shadow® Black-Out Coating.....11	Nite-Shades26	
Copper Plate Coating.....11		
Vinyl & Fabric Coating11	BRITE TOUCH™ PAINTS & PRIMERS 28	
Trunk Paint12		
Carbon Fiber Kit12		
	KRYLON® RUST PROTECTION 29	
RESTYLING..... 13	Rust Protection.....30	
Custom Wrap14	Rust Tough Rust Preventative Enamel.....31	
Trim & Bumper Paint.....15	Rust Tough Primers.....31	
Plastic & Vinyl Restore Coating15		
Stainless Steel.....16		
Automotive Metallic.....16		
Metal Specks.....16		
Metalcast®16		
Textured Metallic.....17		
Effex17		

Primers

1938

AUTOMOTIVE PRODUCTS SINCE



FILLER PRIMER

311 g cans — Case pack: 6

Dupli-Color® Filler Primer features a high-build automotive formulation capable of filling deep scratches and minor surface imperfections. A fast-drying, sandable finish allows for easy feather edging while providing a smooth and rust-resistant surface that promotes topcoat uniformity.

- Features EZ Touch® Fan Spray Nozzle
- Fills deep scratches and minor imperfections
- Improves topcoat adhesion
- High-build formula
- Easy sanding properties
- Dry to touch in 30 minutes / handle in one hour
- Use on metal, wood and fiberglass surfaces

Red Oxide Filler Primer CFP102 0-26916-40102-1	Gray Filler Primer CFP101 0-26916-40101-4
--	---

SELF-ETCHING PRIMER

340 g cans — Case pack: 6

Dupli-Color Self-Etching Primer etches and primes bare metal in one step, making it ideal to use as the first step in all automotive priming projects and for use on spot repairs. A high-quality formulation allows for maximum adhesion under all types of automotive finishes on hard plastics, fiberglass, bare steel, aluminum and stainless steel surfaces.

- Features EZ Touch Fan Spray Nozzle
- Superior etching ability on bare surfaces
- Perfect for spot repairs
- Maximum adhesion and corrosion resistance
- Dry to touch in 30 minutes / handle in one hour
- Ideal for use on bare metal, aluminum and fiberglass

Self-Etching Primer
CDAP1690
0-26916-00655-4

SANDABLE PRIMER

340 g cans — Case pack: 6

Dupli-Color Sandable Primer is an all-purpose, fast-drying primer that can be sanded to a smooth finish to help achieve topcoat uniformity. Great for smooth fill-in of surface cracks and imperfections, and is effective on both painted and unpainted surfaces.

- Features EZ Touch Fan Spray Nozzle
- Helps achieve topcoat uniformity
- For use on pre-painted and unpainted surfaces
- Sands easily
- Dry to touch in 30 minutes / handle in one hour
- Use on metal, wood and fiberglass surfaces

Rust Resistant Primer CDAP1687 0-26916-00002-6	Gray Hot Rod Primer CDAP1692 0-26916-00004-0	Black Hot Rod Primer CDAP1698 0-26916-00006-4
White Primer CDAP1689 0-26916-00003-3	Red Oxide Primer CDAP1694 0-26916-00005-7	Zinc Chromate Primer CDAP1691 0-26916-02426-8

PRIMER SEALER

340 g cans — Case pack: 6

Dupli-Color Primer Sealer creates a smooth, uniform surface for final coating by completely sealing the primed surface. Provides maximum corrosion resistance and improves bonding of base colors on all metal, wood and fiberglass surfaces.

- Features EZ Touch Fan Spray Nozzle
- Provides a smooth, uniform surface for topcoat
- Provides maximum corrosion resistance

Primer Sealer
CDAP1699
0-26916-00007-1

2-IN-1 HI-BUILD PRIMER

340 g cans — Case pack: 6

2-in-1 Filler and Sandable Primer is the latest addition to our Primer Series and provides increased adhesion and corrosion resistance. The exclusive Hi-Build Formula offers higher solids for faster fill-in and repair of minor imperfections combined with easier sanding. Ideal for use on metal, fiberglass and wood.

- Hi-Build formula
- Ideal for metal, fiberglass and wood surfaces
- Perfect for interior and exterior applications
- Features EZ Touch Fan Spray Nozzle

2-in-1 Hi-Build Primer
CDAP170
0-26916-10215-4

ADHESION PROMOTER

311 g cans — Case pack: 6

Dupli-Color Adhesion Promoter improves adhesion of enamel and lacquer topcoats to all surfaces, including plastic and chrome. Adhesion promoter is suited for interior/exterior use and will maximize topcoat performance.

- Features EZ Touch Fan Spray Nozzle
- Improves topcoat adhesion to plastic and chrome
- Quick-drying clear
- Dry to touch in 20 minutes / handle in one hour
- Use on interior and exterior applications
- Ideal for use on all metal and plastic surfaces

CCP199 - Adhesion Promoter Clear Primer

Clear
CCP199
0-26916-00036-1

Prep

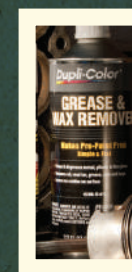
946 mL cans — Case pack: 6

GREASE AND WAX REMOVER

Surface preparation is a critical step in any quality painting project. Dupli-Color® simplifies your painting preparation needs by offering a complete line of grease and wax removers, including: Prep-Wipe, Prep-Spray and grease and Wax Remover in quart containers. Each product removes dirt, road tar, grease, wax and oil from any surface without leaving a film residue.

- The very first step in any paint project
- Removes grease and wax prior to painting
- Each Prep-Wipe towelette measures 8.5 in. x 11 in.
- Promotes maximum paint adhesion
- Dries quickly with no residue

CCM541 - 946 mL 0-26916-00671-4



PREP-SPRAY

NEW!

Prep-Spray — 340 g cans — Case pack: 6

Dupli-Color Prep-Spray is specifically formulated to remove oil, wax, grease and other contaminants from metal surfaces. The use of Dupli-Color Prep-Spray prior to painting will maximize your gloss and finish for best performance. Other suggested substrates for use include: OEM finishes, fiberglass, bare metal, automotive plastics and aluminum.

- Solvent-borne, fast-drying formula
- Safe on metal and plastic surfaces
- Maximize paint performance and adhesion.

CPS100 - Prep-Spray 0-26916-16196-3

NEW!

MULTI-PURPOSE FOAMING PREP CLEANER

Prep Cleaner — 340 g — Case pack: 6

Dupli-Color Multi-Purpose Foaming Prep-Spray is specifically formulated to remove oil, wax, grease and other contaminants from the surface. The foaming action makes applying the cleaner easy and will not affect primed surfaces, making it ideal to clean dust created from sanding or for use on paint prepped areas. Other suggested substrates for use include: OEM finishes, fiberglass, bare metal, automotive plastics and aluminum.

- Use during all steps of the painting process
- Waterborne, fast-drying formula
- Safe on all automotive surfaces
- Maximize paint performance and adhesion

CPS200 - Foaming Prep Cleaner 0-26916-16197-0



RUST FIX

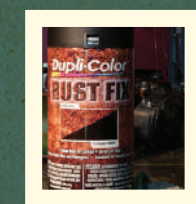
290 g cans — Case pack: 6

Dupli-Color Rust Fix transforms surface rust into a sandable, paintable surface. Sprays on clear and transforms to a black, metal-protecting coating that prevents future rust from forming. Rust Fix saves you the time of sanding all the way down to bare metal and can be used with body filler and fiberglass.

- Destroys rust on contact
- Prevents future rust from forming
- Sands to smooth finish for topcoating
- Dry to touch in 30 minutes / handle in one hour

CRF129- Black

Black
CRF129
0-26916-00037-8



BATTERY CLEANER

311 g cans — Case pack: 6

Dupli-Color Battery Cleaner removes corrosion buildup, dirt and grime from battery terminals and cables.

CBC900 - Battery Cleaner - 0-26916-15426-2

BATTERY PROTECTOR

311 g cans — Case pack: 6

Dupli-Color Battery Protector seals battery terminals, cables and ignition systems. A protective, airtight, waterproof seal stops terminal corrosion, minimizes leakage and reduces current loss. Prolongs the life of your battery by assuring continued high voltage output.

- Prevents corrosion
- Prolongs battery life
- Protects battery
- Translucent orange

CBP900 - Battery Protector - 0-26916-15425-5

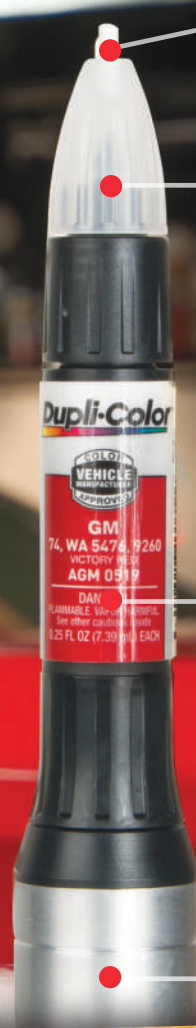
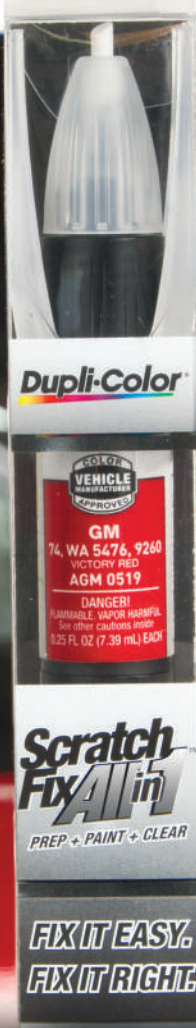


Scratch Fix All-in-1

Introducing Scratch Fix All-in-1™, the ultimate tool for scratch and chip repair.

Manufacturer Coverage

Acura	Lexus
Buick	Lincoln
Cadillac	Mazda
Chevrolet	Mercury
Chrysler	Mitsubishi
Dodge	Nissan
Ford	Oldsmobile
GM	Plymouth
GMC	Pontiac
Honda	Saturn
Hyundai	Scion
Infiniti	Subaru
Jeep	Toyota
Kia	Volkswagen



Prep It.

Abrasive tip removes loose paint and rust.



Paint It.

One-coat, prime-and-paint formula.



Pen tip for fine scratches.

Brush end for larger chips.



Seal It.

Clear coat to seal, protect and ensure a perfect factory-matched finish.



SCRATCH FIX ALL-IN-1

The Dupli-Color® Scratch Fix All-in-1 touch-up tool features an abrasive prep tip, exact color-match paint and clear coat. The convenient, ergonomically designed Scratch Fix All-in-1 is the first touch-up tool of its kind to combine both paint and clear protective topcoat in a single package, with all the tools and applicators required to restore a nick, chip or scratch back to the vehicle's original factory finish. We are the only brand to offer a perfect match to the original factory finish. The new Scratch Fix All-in-1 tool helps you fix it easy and fix it right ... in your garage.

15 mL tubes — Case pack: 12

Additional All-in-1 Advantages:

- Dupli-Color is the ONLY brand offering colors tested and approved by vehicle manufacturers
- One-coat, prime-and-paint formula speeds the repair process
- Patented, ergonomic design reduces hand fatigue
- Heavy coil spring paint agitator provides 360-degree mixing for even color results
- Perfect glove box or garage storage, as the aluminum construction prevents solvent loss, and is impact and weather resistant

See How



UNIVERSAL TOUCH-UP NEW!

Dupli-Color Universal Touch-Up is the ideal solution for repairing minor scratches and chips with one convenient tool. The prep tip removes rust and loose paint. The paint can be applied using the pen tip for fine scratches or the tapered brush for larger chips.

- Needle paint tip provides precision and control
- Taper-tip brush is ideal for large-coverage areas
- Dry to touch in 20 minutes / handle in 40 minutes

15 mL pens — Case pack: 12

- CBUNX910 – Universal White 0-26916-14726-4
- CBUNX911 – Universal Black 0-26916-14727-1
- CBUNX912 – Universal Red 0-26916-14728-8
- CBUNX913 – Universal Grey 0-26916-14729-5
- CBUNX914 – Universal Blue 0-26916-14730-1
- CBUNX915 – Universal Silver 0-26916-14731-8



SCRATCH SEAL CLEAR SEALER PEN

Scratch Seal is an easy-to-use, high-quality, fast-drying, clear paint specially formulated to permanently seal any scratch. It prevents the scratch from getting worse and becoming an expensive repair until you are ready to fully repair it with touch-up paint. It goes on clear and dries clear — virtually invisible.

- Permanently seals scratches and chips to prevent further rust and flaking
- Stop the damage before it becomes an expensive repair

SFSS100 – Scratch Seal Clear Sealer Pen 0-26916-01414-6



PERFECT MATCH®

Dupli-Color® Perfect Match Premium Automotive Paint is an easy-to-use, high-quality, fast-drying, acrylic lacquer aerosol paint specially formulated to match the exact color of the original factory-applied coating. Ideal for use on all OEM paint surfaces, Perfect Match is available in a complete line of exact-match colors for current and late-model import and domestic vehicles, making this product ideal for both small-scale vehicle touch-up and for painting vehicle accessories.

227 g. cans — Case pack: 6

- Features EZ Touch 360° Nozzle
- Premium automotive paint
- Available in OEM exact-match colors
- Ensures maximum coverage
- Dry to touch in 30 minutes / handle in one hour
- Ideal for large touch-ups and vehicle accessories

Perfect Match Touch-Up Paint

- CBUN0090 – Universal Black Metallic 0-26916-71702-3
- CBUN0100 – Universal Gloss Black 0-26916-71699-6
- CBUN0104 – Universal Flat Black 0-26916-71701-6
- CBCC – Chrysler Exact-Match Colours
- CBFM – Ford Exact-Match Colours
- CBGM – General Motors Exact-Match Colours
- CBHA – Honda Exact-Match Colours
- CBHY – Hyundai Exact-Match Colours
- CBKA – Kia Exact-Match Colours
- CBNS – Nissan Exact-Match Colours
- CBMZ – Mazda Exact-Match Colours
- CBSU – Subaru Exact-Match Colours
- CBTY – Toyota Exact-Match Colours
- CBVW – Volkswagen Exact-Match Colours

Primer

CBPR0031 – Scratch Filler Primer Gray
0-26916-71711-5

Clear Coat

CBCL0125 – Clear Topcoat
0-26916-71697-2

SEE HOW NOW!



TOTAL COMFORT MEETS TOTAL CONTROL





Did You Know?

We have videos online to show you step by step. Scan these with any QR reader to watch them.



Paint Shop Mid-Coat



Paint Shop Base



Paint Shop Clear

Color Shop

COLOR SHOP® FINISH SYSTEM

Dupli-Color® Color Shop Finish System gives you everything you need to create a high-quality DIY finish-primer, color and clear. Paint Shop is a high-quality lacquer system designed for automotive and motorcycle applications that is easy to apply, dries quickly and can be buffed to a brilliant smooth finish. Paint Shop is a ready-to-spray system that requires no mixing or reducing and, with no recoat window, additional coats can be applied at any time.

946 mL cans — Case pack: 2

- Pre-reduced, ready-to-spray lacquer
- No mixing or reducing required
- Easy to apply and dries quickly
- No recoat window, reapply at any time
- Must be clear coated
- Wet-sands easily
- Ideal for automotive exterior body projects

COLOR SHOP CLEAR OPTIONS: GLOSS OR MATTE

You can choose either the gloss or the matte clear depending on the finish that you desire. These high-grade clears feature excellent sprayability, leveling and superior mar resistance. They are both ready to spray and can be applied over any Paint Shop color for the ultimate in versatility and customization.

METALLIC CLEAR

Color Shop Metallic Clear can be applied to any Color Shop Colour Coat to create a unique special effect.

- Metallic Clear adds a brilliant pearl effect, as tiny, metallic particles will appear to be suspended in the paint's finish



Prep & Prepare Prime Color Optional Effects Clear Coat

RELATED

Step 1

Grey Primer
CBSP100
0-26916-01276-0

Step 2

Jet Black CBSP200 0-26916-01277-7	Championship White CBSP201 0-26916-01278-4	Performance Red CBSP203 0-26916-01280-7	Deep Blue Metallic CBSP204 0-26916-01281-4	Mineral Gray CBSP205 0-26916-01282-1
Brilliant Silver Metallic CBSP202 0-26916-01279-1	Sublime Green Pearl CBSP208 0-26916-84059-2	Midnight Blue CBSP210 0-26916-84061-5	Dark Emerald Green Metallic CBSP209 0-26916-84060-8	Molten Red Metallic CBSP212 0-26916-04310-8

STRAINER KIT

Includes: 3 strainers and 3 stir sticks
NSP400 - Strainer Kit - 0-26916-00065-1
Kit - Case pack: 6

Step 3

Metallic Clear
CBSP301
0-26916-84062-2

Optional

Matte Finish Clear
CBSP307
0-26916-01881-6

Gloss Finish Clear
CBSP300
0-26916-01286-9



1K Clear Coat

1K CLEAR COAT NEW!

Dupli-Color 1K Clear is a high-performance clear coat recommended for use over most any Dupli-Color product for added protection, appearance and performance. Available in both an extreme gloss or matte sheen, the urethane-modified formulation provides a high-quality finish, film hardness, gasoline resistance and UV protection to deliver best-in-class clear coat results. 1K Clear features a big-button spray any way nozzle for superior flow, leveling and sag resistance for a smooth, consistent application. 1K Clear is heat resistant up to 250° F intermittently and can be used for interior, exterior and under-hood applications.

340 g. cans — Case pack: 6

- Dupli-Color® 1K Clear Coat Technology
- Gasoline Resistance
- Scratch and Mar Resistance
- UV Resistance
- Big-button spray any way nozzle
- For use over most any Dupli-Color Coating

Clear High Gloss Finish
C1KCG
0-26916-16149-9

Clear Matte Finish
C1KCM
0-26916-16154-3



Engine Enamel

Extreme High Heat
 (over 500 °F) Intermittent Applications
 See VHT® Flameproof on page 24



ENGINE ENAMEL WITH CERAMIC

Dupli-Color® Engine Enamel contains ceramic resins for maximum heat dissipation and gloss retention. The resins offer protection from exposure to excessive heat and automotive fluids. Excellent for under-the-hood applications, Dupli-Color Engine Enamel will perform to the most rigorous standards of racing, street rod and vehicle restoration enthusiasts. This durable formula resists temperatures up to 500 °F intermittently and produces a superior finish that will not blister, flake, crack or peel.

- Features EZ Touch® Conical Nozzle
- Maximum heat dissipation and high-gloss retention
- Ceramic resins resist heat up to 500 °F
- Dry to touch in 30 minutes / handle in one hour
- Resistant to oil and other automotive fluids
- Will not blister, flake, crack or peel
- For use on engine blocks and engine accessories

Ford Blue CDE1601 0-26916-51601-5	Ford Red CDE1605 0-26916-51605-3	Ford Dark Blue CDE1606 0-26916-51606-0	Chevrolet Orange-Red CDE1607 0-26916-51607-7	General Motors Blue CDE1608 0-26916-51608-4	New Ford Gray CDE1611 0-26916-51611-4
Chevrolet Orange CDE1620 0-26916-51620-6	Old Ford Blue CDE1621 0-26916-51621-3	Chrysler Corp. Blue CDE1631 0-26916-51631-2	Cummins Beige CDE1638 0-26916-51638-1	Daytona Yellow CDE1642 0-26916-51642-8	Chrysler Hemi Orange CDE1652 0-26916-01103-9
NEW!					
Alpine Green CDE1618 0-26916-51618-3					

OEM

Colours

Universal Gold CDE1604 0-26916-51604-6	Gloss Black CDE1613 0-26916-51613-8	Aluminum CDE1615 0-26916-51615-2	GM/Chrysler Low-Gloss Black CDE1634 0-26916-51634-3
Grabber Green (Lime) CDE1641 0-26916-51641-1	Cast Coat Aluminum CDE1650 0-26916-51650-3	Cast Coat Iron CDE1651 0-26916-51651-0	Red CDE1653 0-26916-01104-6
NEW!			
Semi-Gloss Black CDE1635 0-26916-51635-0	Universal White CDE1602 0-26916-51602-2	Industrial Red CDE1632 0-26916-51632-9	Flat Black CDE1654 0-26916-15715-7

Primer & Clear

NEW!	
Grey Engine Primer CDE1612 0-26916-15714-0	Clear CDE1636 0-26916-51636-7

Caliper



CALIPER PAINT

Customizing brake calipers has never been easier. Dupli-Color® Caliper Paint is a durable, protective coating resistant to chipping, brake dust and automotive chemicals. Formulated with ceramic resins, this high-gloss coating resists temperatures up to 500 °F. Caliper Paint is available in an aerosol can for applying to brake calipers when removed from your vehicle, and also in a brush-on kit for applying when your brake calipers are not removed from your vehicle. The Dupli-Color Caliper Paint Kit includes: Caliper Paint Half-Pint, Caliper Aerosol Cleaner, Stir Stick, Paintbrush, Masking Tape and Step-by-Step Instruction Booklet.

Aerosol Paint – 340 g. can — Case pack: 6, Aerosol Cleaner – 340 g can — Case pack: 6, Paint Kit — Case pack: 2

- Aerosol Features EZ Touch® Conical Nozzle
- Ceramic resins resist heat up to 500 °F
- Fast-drying, durable finish
- Dry to touch in 30 minutes / handle in one hour
- Resistant to chipping, chemicals and brake dust
- For use on brake calipers, rotors and drums

CALIPER PAINT KIT

Includes: Caliper Paint Half-Pint, Caliper Aerosol Cleaner, Stir Stick, Paintbrush, Masking Tape and Step-by-Step Instruction Booklet.

Red CBCP4000 0-26916-04000-8	Matte Black* CBCP40200 0-26916-04002-2	Silver* CBCP40300 0-26916-04003-9	Gloss Black* CBCP40500 0-26916-04312-2	Blue* CBCP40400 0-26916-01073-5
------------------------------------	--	---	--	---------------------------------------

***WHILE SUPPLIES LAST!**



Watch Now!

Wheel Coating



Customize or dress up worn-out wheels with Dupli-Color® Wheel Coating. This advanced, track-tested, acrylic enamel formula restores original wheel appearance and protects against brake dust, chemicals, cleaning solvents, heat and chipping. Dupli-Color Wheel Coating features a highly durable finish with superior adhesion to steel, aluminum, and plastic wheels and wheel coverings.

340 g cans - Case pack: 6

- Durable finish resists brake dust and chemicals
- Restore to original wheel appearance or customize
- Resists cracking, flaking and peeling
- Dry to touch in 30 minutes / handle in one hour
- Use on wheels and accessories

High-Performance White CHWP10000 0-26916-00641-7	High-Performance Silver CHWP10100 0-26916-00642-4	High-Performance Graphite CHWP10200 0-26916-00643-1	High-Performance Satin Black CHWP104 0-26916-10400-7	High-Performance Gloss Black CHWP108 0-26916-14097-5
High-Performance Bronze CHWP10500 0-26916-10500-4	High-Performance Gloss Clear Coat CHWP10300 0-26916-00644-8	High-Performance Matte Clear Coat CHWP10600 0-26916-04309-2	High-Performance Matte Gold CHWP111 0-26916-16195-6	
High-Performance Matte Rose Gold CHWP109 0-26916-16193-2	High-Performance Matte Copper CHWP110 0-26916-16194-9			

LEARN HOW TO COAT YOUR WHEELS



LEARN HOW NOW!

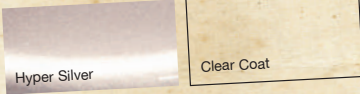


Hyper Silver Coating

Dupli-Color Hyper Silver Coating is a two-can system that creates a deep silver metallic finish over all types of wheel finishes. The system includes the Hyper Silver basecoat. The Clear topcoat adds gloss, depth and protection from the elements. Dupli-Color Hyper Silver Coating is resistant to brake dust, road abrasion, chipping and fading, making it ideal for customizing any car, bike, truck wheel or accessory.

- Durable finish resists brake dust and chemicals
- Deep silver metallic finish
- Ideal for wheels, trim and accessories

CHSK100
2-Can Kit 311 g cans - Case pack: 2
0-26916-04308-5

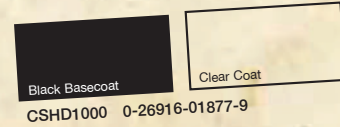


Shadow Black-Out Coating

Dupli-Color® Shadow® Chrome Black-Out Coating is a two-can system that creates the popular look of black chrome on polished metal or chrome surfaces for cars, trucks and motorcycles. The system includes a translucent, black basecoat that casts a dark shadow effect. The clear topcoat is for added gloss, depth and protection from the elements. Shadow is resistant to brake dust, road abrasion, chipping and fading, making it ideal for chrome wheels, bumpers, interior/exterior trim, accessories and under hood components.

- Durable, high-gloss finish
- Black, tinted effect over chrome
- Creates a custom, black chrome appearance
- Ideal for wheels, trim and accessories

CSHD1000 - Black-Out Kit
2-Can Kit 311 g cans - Case Pack: 2
0-26916-01877-9



Vinyl & Fabric VINYL & FABRIC COATING

Restore or customize your interior vinyl seats, dashboards, door panels, shifter boots and consoles with Dupli-Color® Vinyl & Fabric Coating. Formulated with a maximum adhesion promoter so there's no need for primer. Dupli-Color Vinyl & Fabric Coating won't crack, peel or chip.

- Features EZ Touch® Fan Spray Nozzle
- Flexible self-priming formula
- Resists cracking, flaking and peeling
- Dry to touch in 30 minutes / handle in one hour

2-Can Kit 311 g cans - Case Pack: 2



COLORS

High-Performance Gloss Black CHVP10400 0-26916-01079-7	High-Performance White CHVP10500 0-26916-01080-3	High-Performance Flat Black CHVP10600 0-26916-01081-0	High-Performance Desert Sand CHVP10800 0-26916-01083-4
High-Performance Burgundy CHVP11000 0-26916-01085-8	High-Performance Charcoal Gray CHVP11100 0-26916-01086-5	High-Performance Medium Blue CHVP11200 0-26916-01087-2	High-Performance Red CHVP10000 0-26916-10001-6



TRUNK PAINT

Dupli-Color® Trunk Paint is a durable, water-resistant, multicolor spatter finish that has been formulated to replicate the appearance of factory trunk interiors.

312 g cans — Case pack: 6



Grey & White
CDM100
0-26916-10685-8

Black & Aqua
CDM109
0-26916-10687-2

Black & Grey
CDM102
0-26916-10686-5



CUSTOM WRAP

REMOVABLE COATING



CARBON FIBER KIT

Dupli-Color Carbon Fiber Kit is a two-can system that features our Dimensional Effex® Template to create a carbon fiber appearance on any plastic* or metal surface. The two-step system starts with a Graphite Metallic Basecoat to create a deep, graphite metallic base. Then the unique combination of our Dimensional Effex Template and Black Topcoat brings the carbon fiber look to life. The topcoat also adds gloss, depth and added protection to the finish. The Dupli-Color Carbon Fiber Kit is ideal to create a carbon fiber look on any of your projects.

2-Can Kit 311 g cans with 1-20"x30" template — Case pack: 2

- Carbon fiber effect for automotive accessories
- Metal and plastic* surfaces
- Nick, chip and fade resistant
- For plastic surfaces, it is recommended to use adhesion promoter for optimal results.

Carbon Fiber Kit
CCFK100
0-26916-04556-0



*For plastic surfaces, it is recommended to use adhesion promoter for optimal results

TEMPLATE INCLUDED!



WHILE SUPPLIES LAST!

Dupli-Color® Custom Wrap is specifically formulated for automotive customization projects.

- Custom Wrap provides a smooth, professional-looking finish that resists the wear and tear of daily driving.
- Ideal for original factory-painted finishes, aluminum, metal, chrome and plastic on entire vehicle, accents, wheels and more.
- Features EZ Peel® Technology for optimal peel. It is recommended that Custom Wrap be removed or recoated approximately six months after initial application.



Dupli-Color®

CUSTOMWRAP REMOVABLE COATING



Change the colour or look of your vehicle with spray-on peel-off removable coating.



Clears

Matte Clear CCWRC900 0-26916-09998-3	Gloss Clear CCWRC901 0-26916-09999-0
--	--

311 g — Case pack: 6

Camouflage

Matte Forest Green CCWRC850 0-26916-07857-5	Matte Desert Sand CCWRC851 0-26916-07858-2	Matte Woodland Brown CCWRC852 0-26916-07856-8
---	--	---

311 g cans — Case pack: 6

Gloss **NEW!**

Gloss Black CCWRC840 0-26916-16161-1	Gloss Modern White CCWRC841 0-26916-16163-5	Gloss True Blue CCWRC842 0-26916-16164-2	Gloss Racing Red CCWRC843 0-26916-16166-6
--	---	--	---

311 g — Case pack: 6

Lens Tint

Smoke CCWRC815 0-26916-15270-1

311 g cans — Case pack: 6



Matte

Matte Carbon Black CCWRC794 0-26916-07855-1	Matte Performance Red CCWRC795 0-26916-09987-7	Matte Patriot Blue CCWRC796 0-26916-09988-4	Matte Graphite CCWRC797 0-26916-09989-1	Matte Arctic White CCWRC798 0-26916-09990-7	Matte Jet Gray CCWRC799 0-26916-09991-4
Matte Plum Purple CCWRC801 0-26916-09992-1	Matte Daytona Yellow CCWRC802 0-26916-09993-8	Matte Sublime Green CCWRC803 0-26916-09994-5	Matte Passion Pink CCWRC804 0-26916-09995-2	Matte Torque N Teal CCWRC805 0-26916-09996-9	Matte Bright Orange CCWRC806 0-26916-09997-6

311 g. cans — Case pack: 6

TRIM & BUMPER PAINT

Our new Trim & Bumper Paint features Fade-X™ Technology to ensure a long-lasting finish for exterior and interior applications. This specialty formulation restores trim and bumper surfaces back to their factory look.

340 g cans — Case pack: 6

- Renews and protects
- Flexible finish
- Ideal for plastic, rubber, metal and chrome surfaces

Clear CTB100 0-26916-10211-9	Black CTB101 0-26916-10212-6	Dark Charcoal CTB102 0-26916-10213-3
------------------------------------	------------------------------------	--



PLASTIC & VINYL RESTORE COATING

Dupli-Color® Plastic & Vinyl Restore Coating bonds to the substrate, leaving behind a smooth finish that is like new. It's a clear coating that can be used on interior or exterior plastics and vinyl of any color. This product also features Fade-X Technology, designed to protect the application from UV rays and will keep plastic and vinyl looking new 5X longer than competitive silicone products.*

*As compared to conventional silicone-based plastic and vinyl restoration products.

340 g cans — Case pack: 6

- Restores and protects any color
- Long-lasting, durable, clear coating
- Interior and exterior use

Plastic & Vinyl Restore CPRC1000 0-26916-04479-2
--





STAINLESS STEEL

Dupli-Color® Stainless Steel Coating provides the brilliant and popular look of stainless steel to automotive accessories, such as trim, grills and bumpers. Stainless Steel Coating dries quickly to a durable finish and resists temperatures up to 250 °F, allowing for underhood applications. Features excellent adhesion to metal, wood, iron, glass and most other surfaces.

- Creates the high-quality look of stainless steel
- Ideal for automotive trim and accessories
- Durable finish

Stainless Steel
CSS100
0-26916-01882-3

311 g cans — Case pack 6

AUTOMOTIVE METALLIC

Dupli-Color Automotive Metallic products provide a brilliant metallic finish to automotive trim and accessories. Available in chrome and gold, Dupli-Color Automotive Metallic products are ideal for interior and exterior use.

- 311 g cans — Case pack: 6
- Features EZ Touch® Fan Spray Nozzle
 - Brilliant metallic finish
 - Dry to touch in 30 minutes / handle in one hour
 - Ideal for use on accessories, trim and molding

Chrome
CCS101
0-26916-00013-2

Gold
CGS100
0-26916-00014-9

METAL SPECKS

Dupli-Color Metal Specks combines "old school" color with "new school" technology to create the next evolution in metal flake paints. Create a unique and custom brilliant metallic finish with this coating that features tiny floating metallic flakes suspended in vibrant paint. Metal Specks is ideal for customizing automotive accessories such as spoilers, mirrors and molding.

311 g cans — Case pack: 6

- Heavy metallic paint
- Brilliant metal flake shimmer
- Easy to use and dries quickly
- Dry to touch in 30 minutes / handle in one hour
- Use on auto accessories and recreational equipment

Burnt Copper CMS100 0-26916-01070-4	Sparkle Silver CMS200 0-26916-01066-7	Retro Red CMS300 0-26916-01067-4
Ocean Blue CMS400 0-26916-01068-	Shimmering Green CMS500 0-26916-01069-8	



METALCAST®

Dupli-Color® Metalcast Anodized Color turns ordinary chrome pieces into a bright, transparent-colored metallic finish in an easy one-step process. Metalcast is a durable enamel finish that is oil, gas and heat resistant up to 500 °F intermittently, making it ideal for interior, exterior and high-heat applications under the hood. Specially formulated to work over properly prepared shiny, bare metal and faux, chrome-like surfaces.

Paint tip: Clear coat with DE1636 Engine Enamel Clear for added gloss and durability.

311 g cans — Case pack: 6

- Features EZ Touch® Fan Spray Nozzle*
- Creates an anodized color effect
- Dress up chrome or polished metal surfaces
- Resistant to heat up to 500 °F
- Dry to touch in 30 minutes / handle in one hour
- Use on chrome automotive accessories

*Ground Coat does not have EZ Touch® Fan Spray Nozzle

Red Anodized CMC200 0-26916-00652-3	Blue Anodized CMC201 0-26916-00653-0	Green Anodized CMC203 0-26916-80203-3	Purple Anodized CMC204 0-26916-80204-0	Smoke CMC206 0-26916-01072-8	Ground Coat CMC100 0-26916-00651-6
---	--	---	--	------------------------------------	--



TEXTURED METALLIC

Dupli-Color® Textured Metallic Coating combines textured particles with metallic highlights to create a unique finish and color. This skid-resistant coating can be used on interior finishes including trunks, dashboards, door trim and more. Textured Metallic Coating is easy to apply, fast drying and does not require a primer.

- Textured coating with metallic highlights
- Skid-resistant surface
- Easy to apply and covers surface blemishes
- Dry to touch in 30 minutes / handle in one hour
- Use on dashboards, trunks and molding

311 g cans — Case pack: 6

Graphite
CMX100000
0-26916-11002-2



EFFEX

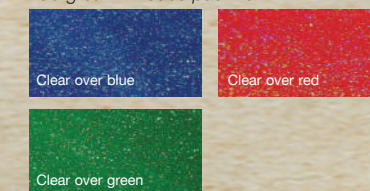
Give nonmetallic paint a brilliant glitter effect with Dupli-Color Effex. Available as a clear topcoat, which allows the base color it is applied over to shine through.

Effex is formulated with tiny, brilliant metallic particles that change colors when exposed to various angles of light. Ideal for accessories like body molding, hood scoops, mirrors and spoilers.

- Features EZ Touch® Fan Spray Nozzle
- Brilliant glitter effect
- Tiny, metallic prism flakes change color in light
- Easy to use and dries quickly
- Dry to touch in 20 minutes / handle in one hour
- Ideal for body, molding, scoops and mirrors

CEFX10 Clear 0-26916-01090-2
CEFX101 Black 0-26916-01065-0

198 g can — Case pack: 6



Clear over blue

Clear over red

Clear over green



BED ARMOR™ 467 g Aerosol can — Case pack: 6; Kit: 3.78 L — 12227 g. — Case pack: 2; 946 mL* — Case pack: 2

Dupli-Color® Bed Armor Do-It-Yourself Truck Bed Liner is a water-based, rubberized polyurethane coating. It is ideal for protecting truck beds and all other metal, aluminum, fiberglass and wood surfaces. This special formula won't chip, fade or flake and has a textured, black satin finish that provides the ultimate in truck bed protection. The Bed Armor Truck Bed Protection Kit includes: (1) Bed Armor gallon, roller cover and frame, roller tray, trim brush, scuff pad, stir stick and a step-by-step instruction booklet.

- DIY Truck Bed Liner
- Water-based polyurethane coating
- Durable and rubberized finish extends bed life
- Impact-resistant finish won't flake, chip or peel
- Use on metal, wood, fiberglass and concrete

Black 946 mL* CBAQ2010 0-26916-01352-1	Black Kit CBAK2010 0-26916-01342-2	Black Aerosol CBAA2010 0-26916-01358-3
--	--	--

*Quart sold separately from Bed Armor Kit



BED ARMOR AEROSOL CAMOUFLAGE

Dupli-Color Bed Armor Do-It-Yourself Truck Bed Liner in camouflage colors is an excellent way to create a new camouflage appearance or revitalize existing sporting equipment.

- Camouflage accent ideal for campers, ATVs, hunting and fishing equipment
- Low-odor, water-based polyurethane coating
- Durable, rubberized textured finish
- Impact resistant

NOTE: For truck bed application, it is recommended to apply camo colors over the original Dupli-Color Bed Armor. This step is not required for smaller projects.

Dark Olive CBAA2020 0-26916-07852-0	Sandstorm CBAA2030 0-26916-07853-7	Midnight Brown CBAA2040 0-26916-07854-4
---	--	---

467 g Aerosol — Case pack: 6

TRUCK BED COATING SPRAY GUN

Our truck bed coating spray gun is ideal to create a uniform coating for larger truck beds or any larger wood, concrete, fiberglass or metal surface areas.

CBAG100
0-26916-04328-3



CLEAR TRUCK BED COATING

946 mL — Case pack: 2; 3.78 L — Case pack: 4

Dupli-Color® Clear Truck Bed Coating is a solvent-based coating ideal for protecting truck beds and all other metal, aluminum, fiberglass and wood surfaces. Clear Truck Bed Coating's exclusive formula allows users to retain their factory truck bed color, while offering superior adhesion, impact resistance and flexibility, as well as an attractive, textured clear finish that provides maximum truck bed protection.

CCTBQ1000 - 946 mL 0-26916-10688-9 CCTBG1000 - 3.78 L 0-26916-10689-6

TRUCK BED COATING

Aerosol - 467 g cans — Case pack: 6;
946 mL — Case pack: 2; 3.78 L — Case pack: 4

Dupli-Color Truck Bed Coating is a durable black coating that protects truck beds at a fraction of the cost of conventional drop-in truck bed liners. Dupli-Color Truck Bed Coating is designed for the do-it-yourself user and is available with multiple application methods. It can be applied using a roller, spray gun or aerosol spray can, making it ideal for use as an all-purpose protective coating for truck beds, inner fenders, tailgates, bedrails, cargo vans, step areas and running boards.

- Versatile all-purpose protective coating
- Durable, impact-resistant coating
- Dry to touch in one hour / handle in two hours
- Use on truck beds, Jeep tubs and frames

AEROSOL

CTR250A - Black 0-26916-00045-3

Black
CTR250

GALLONS

CTRG250A0 - 3.78 L 0-26916-00046-0

Black
CTRG250

ACCESSORIES

TRG103 - Roller Kit 0-26916-00103-0

CBAG100 - Truck Bed Coating Spray Gun 0-26916-04328-3



General Purpose



PREMIUM LACQUER

Dupli-Color® Lacquer is a fast-drying, premium-quality formula that provides quick coverage, weatherability and adhesion. Perfect for automotive trim and detail projects, it delivers a rich, glossy finish every time.

PREMIUM ENAMEL

Dupli-Color Acrylic Enamels deliver the ultimate protection, gloss and color retention. A superior, high-solids formula ensures maximum coverage and performance.

Flat Black CDAL1607 0-26916-41607-0	Semi-Gloss Black CDAL1608 0-26916-41608-7	Gloss Black CDAL1677 0-26916-41677-3
Gloss White CDAL1675 0-26916-41675-9	Silver Metallic CDAL1679 0-26916-41679-7	Clear Lacquer CDAL1695 0-26916-41695-7

Gloss Black (OSHA Black) CDA1600 0-26916-41600-1	Semi-Gloss Black CDA1603 0-26916-41603-2	Flat Black CDA1605 0-26916-41605-6	Machinery Grey CDA1612 0-26916-41612-4
Royal Blue CDA1620 0-26916-41620-9	Leaf Green CDA1630 0-26916-41630-8	Cherry Red (Equipment Red) CDA1640 0-26916-41640-7	Crystal Clear CDA1692 0-26916-41692-6
Gloss White CDA1670 0-26916-41670-4	Flat White CDA1672 0-26916-41672-8	Chrome Aluminum CDA1684 0-26916-41684-1	Matte Clear CDA1693 0-26916-07607-6
School Bus Yellow CDA1663 0-26916-41663-6			

340 g cans - Case pack: 6

HI-BUILD FLEET COATING

Dupli-Color® Hi-Build Fleet Coating is a high-solids enamel paint that provides superior coverage and durability. It's ideal for over-the-road applications due to its chemical resistance and corrosion protection formulation. Hi-Build Fleet Coating is available in a large 453 g. can (most colors) for maximum coverage and is offered in a variety of popular fleet application colors.

- Features EZ Touch® Conical Nozzle
- Provides a durable and rust-resistant finish
- Superior high-solids enamel formula
- Dry to touch in 30 minutes / handle in one hour
- Use on metal, wood and fiberglass

Gray Primer CHB100 0-26916-84071-4	Gloss Black CHB101 0-26916-84072-1
Fleet White CHB104 0-26916-84074-5	Semi-Gloss Black CHB102 0-26916-84073-8

454 g cans - Case pack: 6



UNDERCOATING

Dupli-Color offers a complete line of undercoating product ideal for providing protection for wheel wells, gas tanks, frames and supports, weld joints, floor pans, doors and quarter panels. Dupli-Color Undercoat (UC101) offers economical protection plus paintability, moisture resistance, corrosion resistance and a durable, rubberized finish. Dupli-Color Professional Undercoat with Sound Eliminator (UC102) provides a superior protection by also reducing road vibrations and road noise.

- Protective and paintable rubberized finish
- Resists rust and improves appearance
- Reduces road noise
- Dry to touch in one hour / handle in two hours
- Use on vehicle underbodies and trailer

Paintable Rubberized Undercoat

Black
CUC101
0-26916-60101-8

CUC101 - 453 g cans — Case pack: 12

Professional Undercoat and Sound Eliminator

Black
CUC102
0-26916-60102-5

CUC102 - 482 g cans — Case pack: 12

Professional Coating

RUST BARRIER RUST PREVENTIVE COATING

Dupli-Color Rust Barrier High Solids Rust Preventative Coating is formulated to be applied directly over rusted or bare metal surfaces. Using our exclusive Rust Barrier Technology, this coating seals corrosion and provides an abrasive, impact-resistant flexible rubberized finish. Rust Barrier is easy to apply by brush, roller, HVLP spray gun or aerosol. If needed, this product can be topcoated for areas exposed to increased UV light. Intended for underbody application.

- Paint over rusted and bare metal
- Seals corrosion
- Professional grade
- Paintable
- Impact resistant
- Isocyanate free

QUARTS

Flat Black - 946 mL
CRBQ10000
0-26916-10589-9

GALLONS

Flat Black - 3.78 L
CRBG10000
0-26916-10590-5

AEROSOLS

Flat Black
CRBA100
0-26916-15693-8

Gloss Black
CRBA101
0-26916-15708-9

946 mL - Case pack: 2, 3.78 L - Case pack: 4;
311 g aerosol - Case pack 6



Specialty Chemicals

OMNI-PAK FILL-ONE CANS

Omni-Pak Fill-One Cans come with the specialized filling cap that allows for clean-free aerosol can filling.

- Seconds to fill with no loss of paint product
- Compact system about the size of a coffee maker
- Save money by eliminating costly labor and cleaning solvent

0-75577-01205-3	CB45106	Masterblend™ EZ Touch (DV06) - 123 mL
0-75577-01206-0	CB45112	Masterblend™ EZ Touch (DV12) - 237 mL
0-75577-01207-7	CB45116	Masterblend™ EZ Touch (DV16) - 311 mL
0-75577-01208-4	CB45216	Masterblend™ (FV16) - 311 mL



OMNI-PAK CANS

Omni-Pak cans are pre-filled with propellant and solvent: OFE for enamels and features the EZ Touch® Fan Spray Nozzle.

7-5577-26116-1	CEN16 Enamel Blend - 300 mL
7-55772-5216-9	CLA16 Lacquer Blend - 307 mL

340 g cans - Case pack: 12

SPECIALTY REDUCER

Designed to thin Dupli-Color® Primer Surfacer and to help meet VOC requirements. Use in all weather conditions.

0-26916-00214-3	CBG903 946 mL
-----------------	---------------

OMNI-FILL® AEROSOL FILLING STATIONS

A custom aerosol filling system that allows you to custom match the specific color you need. Use with solvent-based, air-dry enamels, lacquers, vinyl and acrylics. It is a low-maintenance operation that is fast and easy to clean. Just select the right size system for your needs from a hand-operated model for filling one can at a time to our automated models for quickly filling multiple quantities. For more information about Omni-Fill Aerosol Filling Systems, contact your local Dupli-Color representative.

B11111	Omni-Fill 1 Stroke
B11011	Model 11 EZ Hand Pump/Pompe Manuelle EZ Modèle 11 Case wt. 6 kg.
B15015	Model 15 Universal Hand Pump/Pompe Manuelle Universelle Modèle 15 Case wt. 21 kg.



OMNI-PAK FILL-ONE AEROSOL FILLING STATIONS

Fill-One is a revolutionary aerosol filling system that delivers perfectly blended aerosols without cleaning. Let's face it, nobody likes cleaning, especially messy aerosol filling machines. The Fill-One Aerosol Filling System fills cans through the aerosol can cap, which reduces waste, eliminates cleanup and leaves a permanent color indicator on the outside of the cap.

- Seconds to fill with no loss of paint product
- Compact system about the size of a coffee maker
- Save money by eliminating costly labor and cleaning solvent

B10005000	Fill One Manual Machine Hand Pump
B10001000	Fill-One Machine / Fill-One Machine



THE ULTIMATE IN HIGH-HEAT PERFORMANCE COATINGS



HIGH HEAT JUST GOT HOTTER!

It's always been about the heat at VHT®, that's why motorsport enthusiasts have made VHT their choice for high-heat applications. It withstands such extreme high-heat temperatures that it found its way into the space program and was used on space-bound and atmospheric reentry spacecraft. It doesn't get much hotter than that. Our FlameProof line can withstand intermittent temperatures of up to 2000 °F (1093 °C) ... perfect for your exhaust systems, turbo housings and exhaust valves.

VHT also offers other high-heat products for applications ranging from intermittent temperatures of 250 °F (121 °C) to 900 °F (482 °C): High Temp Engine Enamel, Caliper Paint, Wheel Paint, Wrinkle Plus and Roll Bar & Chassis. VHT's complete line of products feature our EZ Touch® nozzle for all of your automotive exterior and interior dress-up applications. Check it out in the pages of this catalog ... or visit vhtpaint.com to learn more!

-  Flat White
CSP101
0-10155-70101-1
-  Flat Red
CSP109
0-10155-70109-7
-  Flat Black
CSP102
0-10155-70102-8
-  Flat Orange
CSP114
0-10155-70114-1
-  Flat Silver
CSP106
0-10155-70106-6
-  Flat Aluminum
CSP117
0-10155-70117-2
-  Flat Gray Primer
CSP100
0-10155-70100-4
-  Nu-Cast Cast Iron
CSP998
0-10155-70998-7
-  Satin Clear
CSP115
0-10155-70115-8



VHT® FLAMEPROOF COATING

VHT FlameProof Coating will renew and extend the life of any surface exposed to extremely high temperatures. This unique coating is a matte finish, silicone ceramic base widely used by the automotive industry on exhaust systems and the aerospace industry for jet engines, reentry vehicles and other high-temperature applications. VHT FlameProof Coating will withstand intermittent temperatures up to 2000 °F (1093 °C) and is ideal for use on headers, exhaust systems or wherever an extreme-temperature coating is needed.

312 g aerosol - Case pack: 6

Temperature: 1300 °F-2000 °F (704 °C-1093 °C) (Intermittent)

Applications: Headers, Exhaust Manifolds, Inside Heads

Finish: Flat

Dry Time: Curing time required and can be done on or off vehicle. (See below.)

Curing FlameProof

VHT FlameProof Coating only attains its unique properties after correct curing (refer to instructions on the can).

On the Vehicle

- Paint must be completely dry before curing
- Run at idle for 10 minutes
- Cool for 20 minutes
- Run at idle for 20 minutes
- Cool for 20 minutes
- Run under normal operating conditions for 30 minutes

Off the Vehicle

- Paint must be completely dry before curing
- Heat to 250 °F (121 °C) for 30 minutes
- Cool for 30 minutes
- Heat to 400 °F (204 °C) for 30 minutes
- Cool for 30 minutes
- Heat to 650 °F (343 °C) for 30 minutes

CAUTION: Do not exceed the temperature of the least heat-tolerant component or the base metal.

Coating System VHT provides a multi-high-performance coating system for the ultimate in protection and quality. The system includes surface preparation, primer, paint and clear coat.

- | | | |
|---------------|--------|-------------------|
| Prime | CSP100 | FlameProof Primer |
| Coat | CSPXXX | FlameProof Color |
| Finish | CSP115 | FlameProof Clear |

VHT® ENGINE METALLIC

Under-hood engine dress up never looked this good, or stood up to high-heat temperatures like VHT Engine Metallic Paint. Formulated for high-temperature and high-performance applications, VHT Engine Metallic Paint creates a cool, sparkling metallic finish and withstands intermittent temperatures of up to 650 °F (343 °C). A unique formulation of urethane and ceramic resins produces a tough and long-lasting finish for engines, engine accessories or any other surface that requires a durable, heat- and chemical-resistant finish.

312 g can - Case pack: 6

Temperature: 650 °F (343 °C) (Intermittent)

Applications: Headers, Engine Blocks, Starters, Brackets, Water Pumps, Valve Cover, Transmissions, Differential Covers

Finish: Flat Metallic

Dry Time: Dries to the touch in 30 minutes. Dries thoroughly overnight.

Curing Engine Metallic

VHT Engine Metallic only attains its unique properties after correct curing.

- Bake at 200 °F (93 °C) for 20 minutes.
- The inherent heat of engine operation will also accomplish curing.

Coating System VHT provides a multi-high-performance coating system for the ultimate in protection and quality. The system includes surface preparation, primer, paint and clear coat.

-  Red Fire
CSP401
0-26916-84077-6
-  Burnt Copper
CSP402
0-26916-84078-3
-  Titanium Silver Blue
CSP403
0-26916-84079-0
-  Gold Flake
CSP404
0-26916-84080-6
-  Black Pearl
CSP405
0-10155-00008-4



VHT® HIGH TEMPERATURE PLASTIC PAINT

NEW!

VHT High Temperature Plastic Paint is formulated for high-heat applications on plastic and withstands temperatures up to 200 °F (93 °C). This product was developed to adhere directly to automotive grade plastics without the need for sanding or a plastic adhesion promotor. VHT High Temperature Plastic Paint is ideal for painting engine covers & components and can be used on interior and exterior plastics. It is resistant to oil and other automotive fluids and will not flake, chip or peel.

340 g can — Case pack: 6

Temperature: 200 °F (93 °C) (Intermittent)

Applications: Plastic Engine Covers and Shrouds

Finish: Matte and Gloss

Dry Time: Dries to the touch in 30 minutes. Handle in 1 hour.

Coating System: No primer or clear coat needed. One product does it all.

-  Matte Black
CSP820
0-10155-00258-3
-  Gloss Orange
CSP823
0-10155-00262-0
-  Gloss Blue
CSP822
0-10155-00261-3
-  Gloss Red
CSP821
0-10155-00260-6
-  Aluminum
CSP824
0-10155-00263-7

VHT WRINKLE PLUS COATINGS

VHT Wrinkle Plus combines strong colors with a deep, rich texture for a custom look. It is temperature resistant to 350 °F (177 °C) and is ideal for adding a touch of personal styling to almost any metal surface. VHT Wrinkle Plus resists color fading, grease, degreasers and severe weather conditions. This tough, durable finish is extremely resistant to rust, corrosion, chipping and cracking.

340 g can — Case pack: 6

Temperature: 350 °F (177 °C) (Intermittent)

Applications: Valve Covers, Metal Dashboards, Glove Boxes, Starters, Door Panels, Shifters, Alternators, Firewalls

Finish: Flat

Dry Time: Dries within 24 hours

Curing Wrinkle Plus

VHT Wrinkle Plus only attains its unique properties after correct curing.

- Bake at 200 °F (93 °C) for 20 minutes.
- The inherent heat of engine operation will also accomplish curing.

- Black
CSP201
0-10155-70201-8
- Red
CSP204
0-10155-70204-9



VHT ROLL BAR & CHASSIS PAINT

VHT Roll Bar & Chassis paint is a one-step epoxy coating that does not require primer. It gives the appearance of a tough, baked-on finish that is chemical, corrosion, rust and salt resistant.

340 g can — Case pack: 6

Temperature: 250 °F (121 °C) (Intermittent)

Applications: Frame and Chassis, Shop Racks, Tools and Equipment, Trailers

Finish: Gloss and Satin

Dry Time: Dries to the touch in 30 minutes. Dries thoroughly overnight. No curing required.

Coating System: VHT provides a high-performance coating for the ultimate in protection and quality.

Coat SPXXX Roll Bar Color

- Gloss Black
CSP670
0-10155-70303-9

- Satin Black
CSP671
0-10155-70671-9



VHT® CALIPER PAINT

VHT Caliper Paint has been specifically designed for the custom detailing of brake components. It is heat resistant to 900 °F (482 °C) and will not chip, crack, fade or rust even under extremes of operation or road and weather conditions. It is easy to apply, dries quickly and is remarkably resistant. Careful preparation is essential.

340 g can — Case pack: 6

Temperature: 900 °F (482 °C) (Intermittent)

Applications: Brake Calipers, Rotors, Brake Drums

Finish: Satin and Gloss

Dry Time: Dries to touch in 30 minutes. Dries thoroughly overnight.

Curing Caliper Paint

VHT Caliper Paint only attains its unique properties after correct curing.

- Bake at 200 °F (93 °C) for 60 minutes.
- The inherent heat of braking operation will also accomplish curing.

Coating System VHT provides a multi-high-performance coating system for the ultimate in protection and quality. The system includes prep, primer, paint and clear coat.

Prep CSP700 Caliper Cleaner

Finish CSP730 Gloss Clear

VHT® NITE-SHADES

VHT Nite-Shades is a transparent tail light lens coating for creating a custom European styling. When applied to tail lights, fog lights or turn indicators, VHT Nite-Shades appears black/red until they are lit, then the natural red/clear color appears. Recommended for off-road use. Warning: Once applied to plastic lens, SP999 is not able to be satisfactorily removed.

283 g. can — Case pack: 6

Temperature: n/a

Applications: Tail Lights, Fog Lights, Turn Indicators

Finish: Gloss

Dry Time: Dries to the touch in one hour. Dries thoroughly overnight. No curing required.

Coating System: VHT provides a high-performance coating for the ultimate in protection and quality.

Coat SPXXX Nite-Shades

- Nite-Shades Black
CSP999
0-10155-70999-4

- Nite-Shades Red
CSP888
0-10155-00005-3



- Real Red
CSP731
0-10155-70731-0

- Real Orange
CSP733
0-10155-70733-4

- Cast Aluminum
CSP735
0-10155-70735-8

- Bright Yellow
CSP738
0-10155-70738-9

- Caliper Cleaner
CSP700
0-10155-00004-6

- Bright Blue
CSP732
0-10155-70732-7

- Gloss Black
CSP734
0-10155-70734-1

- Gold
CSP736
0-10155-70736-5

- Satin Black
CSP739
0-10155-70739-6

- Gloss Clear
CSP730
0-10155-70730-3

BRITE TOUCH™ PAINTS & PRIMERS NEW!

GENERAL PURPOSE PAINT

Brite Touch General Purpose Paint provides a quick-drying formula that's perfect for interior and exterior uses. Perfect for wood, metal and most plastic surfaces. Resists runs and drips and provides a high-gloss finish.

284 g cans — Case pack: 6

ENGINE PAINT

Restore the look of engines and transmissions with Brite Touch Engine Paint. This high-performance aerosol paint resists heat, rust, oil and grease to maintain a smooth finish. Fast drying, it resists heat up to 300 °F intermittently.

284 g cans — Case pack: 6

GENERAL PURPOSE PRIMER

Brite Touch General Purpose Primer improves adhesion and provides a smooth surface for paint application.

284 g cans — Case pack: 6

0-26916-15403-3	CBT49	Gray Primer
0-26916-15404-0	CBT50	Black Primer
0-26916-15405-7	CBT51	Red Oxide Primer



GENERAL PURPOSE PAINT

Gloss White
CBT40
0-26916-15397-5

Flat White
CBT41
0-26916-15398-2

Gloss Black
CBT42
0-26916-15399-9

Flat Black
CBT43
0-26916-15400-2

Gloss Red
CBT44
0-26916-15401-9

Gloss Blue
CBT47
0-26916-15402-6

Clear
CBT54
0-26916-15407-1

Semi-Gloss Black
CBT55
0-26916-15408-8

METALLIC PAINT

Aluminum
CBT53
0-26916-15406-4

ENGINE PAINT

Aluminum
CBT25
0-26916-15390-6

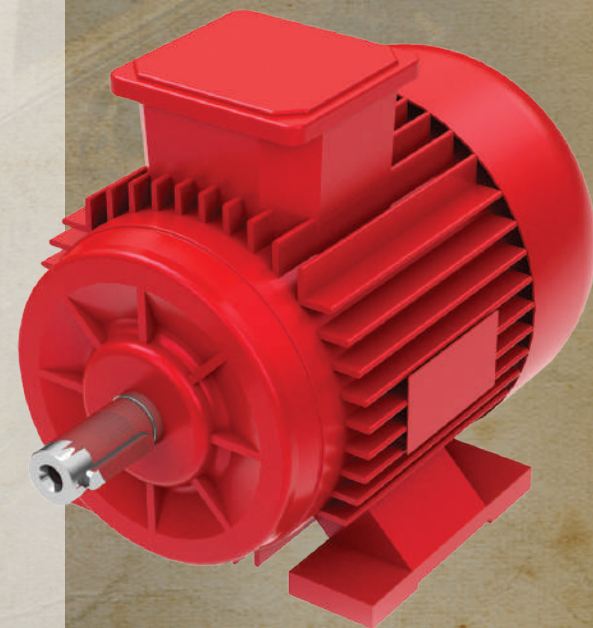
Universal Black
CBT26
0-26916-15391-3

GM Blue
CBT27
0-26916-15392-0

Ford Blue
CBT28
0-26916-15363-7

Chevrolet Orange
CBT29
0-26916-15394-4

Ford Red
CBT30
0-26916-15396-8



Rust Protection



Krylon® Rust Protector Gloss Enamels provide a smooth, durable, rust-fighting finish with superior corrosion protection. Formulated to be applied directly to metal and is quick drying.



Colour Offering for 340 g (other sizes offerings available upon request)

Aerosol

Gloss		
7-24504-01574-1	469000	Gloss White
7-24504-01575-8	469001	Gloss Black
7-24504-01576-5	469002	Gloss Ivory
7-24504-01577-2	469004	Gloss Spice Brown
7-24504-01578-9	469005	Gloss Leather Brown
7-24504-01579-6	469006	Gloss Classic Red
7-24504-01580-2	469007	Gloss Cherry Red
7-24504-01581-9	469009	Gloss Orange
7-24504-01582-6	469010	Gloss Yellow
7-24504-01583-3	469011	Gloss Forest Green
7-24504-01584-0	469014	Gloss Basic Blue
7-24504-01585-7	469015	Gloss Navy
7-24504-01586-4	469018	Gloss Smoke Grey
7-24504-01595-6	469043	Gloss Medium Blue
7-24504-01596-3	469044	Gloss Field Green
7-24504-01587-1	469019	Gloss Crystal Clear
Semi-Gloss		
7-24504-01588-8	469020	Semi-Gloss White
7-24504-01589-5	469021	Semi-Gloss Black
7-24504-01590-1	469022	Semi-Gloss Anodized Bronze
Satin		
7-24504-01591-8	469033	Satin Crystal Clear
Flat		
7-24504-01592-5	469034	Flat White
7-24504-01593-2	469035	Flat Black
7-24504-01594-9	469036	Flat Brown
Preventative Primer		
7-24504-01597-0	469038	Grey Primer
7-24504-01598-7	469039	White Primer
7-24504-01599-4	469040	Red Oxide Primer
Converting Primer		
7-24504-01600-7	469042	Rust Converting Primer
Metallic Paint		
7-24504-01609-0	469301	Antique Brass Metallic
7-24504-01610-6	469304	Silver Metallic
7-24504-01620-5	469307	Black Metallic
7-24504-01622-9	469309	Aluminum
Textured Paint		
7-24504-01625-0	469314	Black Textured
7-24504-01626-7	469315	Khaki Textured
Hammered Paint		
7-24504-01627-4	469319	Copper Hammered
7-24504-01628-1	469320	Brown Hammered
7-24504-01629-8	469321	Silver Hammered
7-24504-01630-4	469323	Dark Bronze Hammered
7-24504-01632-8	469324	Black Hammered



Half-Pint

Gloss		
7-24504-01633-5	469100	Gloss White
7-24504-01644-1	469101	Gloss Black
7-24504-01645-8	469103	Gloss Classic Red
7-24504-01648-9	469110	Gloss Ivory
Metallic Paint		
7-24504-01651-9	469113	Aluminum
Flat		
7-24504-01646-5	469107	Flat White
7-24504-01647-2	469108	Flat Black
Semi-Gloss		
7-24504-01649-6	469111	Semi-Gloss White
7-24504-01650-2	469112	Semi-Gloss Black

Quart

Gloss		
7-24504-01652-6	469200	Gloss White
7-24504-01653-3	469201	Gloss Black
7-24504-01654-0	469202	Gloss Almond
7-24504-01655-7	469203	Gloss Leather Brown
7-24504-01656-4	469204	Gloss Classic Red
7-24504-01657-1	469205	Gloss Cherry Red
7-24504-01658-8	469206	Gloss Yellow
7-24504-01659-5	469208	Gloss Basic Blue
7-24504-01660-1	469209	Gloss Smoke Grey
7-24504-01666-3	469221	Gloss Ivory
7-24504-01667-0	469222	Gloss Spice Brown
7-24504-01668-7	469223	Gloss Green
7-24504-01669-4	469224	Gloss Classic Grey
Metallic Paint		
7-24504-01661-8	469212	Aluminum
Flat		
7-24504-01664-9	469219	Flat White
7-24504-01665-6	469220	Flat Black
7-24504-01671-7	469226	Flat Brown
Semi-Gloss		
7-24504-01662-5	469213	Semi-Gloss White
7-24504-01663-2	469214	Semi-Gloss Black

Gallon

Gloss		
7-24504-02143-8	469400	Gloss White
7-24504-02144-5	469401	Gloss Black
7-24504-02145-2	469402	Gloss Leather Brown
7-24504-02146-9	469403	Gloss Classic Red
7-24504-02147-6	469404	Gloss Yellow
7-24504-02148-3	469405	Gloss Smoke Grey
7-24504-02154-4	469411	Gloss Green
7-24504-02156-8	469413	Gloss Navy
Metallic Paint		
7-24504-02149-0	469406	Aluminum
Flat		
7-24504-02152-0	469409	Flat White
7-24504-02153-7	469410	Flat Black
Semi-Gloss		
7-24504-02150-6	469407	Semi-Gloss White
7-24504-02151-3	469408	Semi-Gloss Black
Preventative Primer		
7-24504-02155-1	469412	Grey Primer

RUST PREVENTATIVE

NEW!

Stop the spread of rust with Krylon®. Our rust prevention products protect metal and also work well on wood, plastic and masonry surfaces. They're easy to use and provide a long-lasting, attractive finish.

KRYLON RUST TOUGH RUST PREVENTATIVE ENAMEL

Stop rust before it happens. Spray Krylon Rust Tough Rust Preventative Enamel directly on your metal surfaces. It stops future rust from forming and dries to the touch in less than 30 minutes.

- No primer needed — direct to metal
- Superior fade resistance
- EZ Touch® Fan Spray nozzle
- Dries to the touch in less than 30 minutes
- Long-lasting rust protection

Ideal on mailboxes, lampposts, outdoor furniture, tools, steel, plastic and masonry.

340 g cans — Case pack: 6

Gloss White 49200 7-24504-49200-9	Semi-Flat White 49201 7-24504-49201-6	Aluminum Metallic 49213 7-24504-49213-9
Gloss Black 49202 7-24504-49202-3	Semi-Flat Black 49203 7-24504-49203-0	Flat Black 49218 7-24504-49218-4
Battleship Gray 49206 7-24504-49206-1	Almond 49207 7-24504-49207-8	Gloss Hunter Green 49223 7-24504-49223-8
Gloss Radiant Red 49210 7-24504-49210-8	Gloss Sun Yellow 49211 7-24504-49211-5	Gloss Cherry Red RTA 9230 7-24504-09230-8
Flat White 49219 7-24504-49219-1		



KRYLON RUST TOUGH PRIMERS

Prevent rust — even in the harshest environments — by spraying your surfaces first with Krylon Rust Tough Primer. This unsurpassed protection dries quickly and is available in a variety of colors.

- Spray directly over rust
 - Protects surfaces from rust
- 340 g cans — Case pack: 6

7-24504-49204-7	49204	Ruddy Brown Primer
7-24504-49205-4	49205	Gray Primer
7-24504-49240-5	49240	Zinc Rich Primer



SPRAY IT RIGHT OVER RUST



KRYLON® COLORMAXX™ PAINT + PRIMER **NEW!**

Krylon COLORmaxx spray paint provides brilliant, on-trend colors in a variety of sheens. This product line offers smooth application, added rust protection and the easy-push, big-button tip that makes it easy to spray at any angle for fast coverage.

- Offers excellent adhesion and durability
- Provides rust protection and fade resistance for indoor and outdoor projects
- Ideal for metal, wood, plastic, wicker, fabric, glass and more
- Easy-push, big-button tip sprays in any direction, even upside down
- Dries in 10 minutes or less

Gloss Banner Red 45503 7-24504-45503-5	Gloss Bahama Sea 45501 7-24504-45501-1	Gloss Almond 45500 7-24504-45500-4	Gloss Bauhaus Gold 45504 7-24504-45504-2	Gloss Blue Ocean Breeze 45506 7-24504-45506-6	Gloss Bright Idea 45507 7-24504-45507-3	Gloss Burgundy 45508 7-24504-45508-0	Gloss Cherry Red 45511 7-24504-45511-0	Gloss Citrus Green 45512 7-24504-45512-7
Gloss Classic Grey 45513 7-24504-45513-4	Gloss Coral Isle 45514 7-24504-45514-1	Gloss Dover White 45516 7-24504-45516-5	Gloss Emerald Green 45517 7-24504-45517-2	Gloss Equestrian 45518 7-24504-45518-9	Gloss Gum Drop 45521 7-24504-45521-9	Gloss Hunter Green 45523 7-24504-45523-3	Gloss Ivory 45524 7-24504-45524-0	Gloss Ivy Leaf 45525 7-24504-45525-7
Gloss Khaki 45526 7-24504-45526-4	Gloss Leather Brown 45527 7-24504-45527-1	Gloss Mambo Pink 45528 7-24504-45528-8	Gloss Navy Blue 45529 7-24504-45529-5	Gloss Pewter Grey 45531 7-24504-45531-8	Gloss Pumpkin Orange 45532 7-24504-45532-5	Gloss Purple 45533 7-24504-45533-2	Gloss Regal Blue 45535 7-24504-45535-6	Gloss Rich Plum 45536 7-24504-45536-3
Gloss Smoke Grey 45539 7-24504-45539-4	Gloss Sun Yellow 45541 7-24504-45541-7	Gloss True Blue 45543 7-24504-45543-1	Gloss Watermelon 45544 7-24504-45544-8	Gloss Machinery Grey 45549 7-24504-45549-8	Satin Almond 45554 7-24504-45554-7	Satin Ballet Slipper 45556 7-24504-45556-1	Satin Bright White 45558 7-24504-45558-5	Satin Brown Boots 45559 7-24504-45559-2
Satin Burgundy 45560 7-24504-45560-8	Satin Catalina Mist 45561 7-24504-45561-5	Satin Hunter Green 45563 7-24504-45563-9	Satin Iris 45564 7-24504-45564-6	Satin Island Splash 45565 7-24504-45565-3	Satin Italian Olive 45566 7-24504-45566-0	Satin Ivory 45567 7-24504-45567-7	Satin Jade 45568 7-24504-45568-4	Satin Leather Brown 45569 7-24504-45569-1
Satin Meringue 45570 7-24504-45570-7	Satin Oxford Blue 45571 7-24504-45571-4	Satin Pebble 45572 7-24504-45572-1	Satin Periwinkle 45573 7-24504-45573-0	Satin Pimento 45574 7-24504-45574-5	Satin Pistachio 45575 7-24504-45575-2	Satin Sea Glass 45576 7-24504-25576-5	Matte Aqua 45549 7-24504-45549-3	Matte Deep Grey 45550 7-24504-45550-9
Matte Glacier 45551 7-24504-45551-6	Matte Seaside Green 45552 7-24504-45552-3	Matte Sunrise 45553 7-24504-45553-0	Matte Eggplant 45594 7-24504-45594-3	Matte Summer Wheat 45595 7-24504-45595-0	Matte Coffee Bean 45596 7-24504-45596-7	Matte Sand Dollar 45600 7-24504-45600-1	Matte Wild Rose 45601 7-24504-45601-8	Matte Soft Lilac 45602 7-24504-45602-5
Matte Sweet Peach 45603 7-24504-45603-2	Matte Deep Denim Blue 5604 7-24504-05604-1	Gloss Black 45505 7-24504-45505-9	Gloss White 45545 7-24504-45545-5	Semi-Gloss Black 45579 7-24504-45579-0	Semi-Gloss White 45580 7-24504-45580-6	Satin Black 45557 7-24504-45557-8	Satin White 45577 7-24504-45577-6	Flat Black 45546 7-24504-45546-2

Flat White 45548 7-24504-45548-6	COLORMAXX ACRYLIC CRYSTAL CLEAR	Gloss Crystal Clear Acrylic 45515 7-24504-45515-8	Flat Crystal Clear Acrylic 45547 7-24504-45547-9	Satin Crystal Clear Acrylic 45562 7-24504-45562-2
	COLORMAXX METALLIC FINISH	Metallic Aluminum 45587 7-24504-45587-5	Metallic Gold 45588 7-24504-45588-2	Metallic Silver 45590 7-24504-45590-5
	COLORMAXX PRIMER	Grey Primer 45582 7-24504-45582-0	Red Oxide Primer 45583 7-24504-45583-7	White Primer 45584 7-24504-45584-4



KRYLON® FUSION ALL-IN-ONE™ PAINT + PRIMER **NEW!**

Krylon Fusion All-In-One Paint + Primer is a premium product that bonds to difficult surfaces, such as plastics and ready-to-assemble furniture, without sanding or priming. Providing maximum rust protection for outdoor projects, this family line also offers a broad color palette with multiple finishes and sheens for indoor home décor projects. The easy-push, big-button tip provides the ability to spray at any angle for fast coverage to get your projects done.

- Superior adhesion to difficult surfaces and a paint + primer in one
- Maximum rust protection and fade resistance
- Easy-push, big-button spray tip allows application in any direction, even upside down
- Dries in 20 minutes or less
- Ideal for ready-to-assemble furniture, metal, wood, plastic, ceramic, glass, masonry and more

Gloss Dover White 42706 7-24504-42706-3	Gloss Espresso 42707 7-24504-42707-0	Gloss Hot Pink 42708 7-24504-42708-7	Gloss Hunter Green 42789 7-24504-42789-6	Gloss Ivory 42711 7-24504-42711-7	Gloss Jungle Green 42712 7-24504-42712-4	Gloss Khaki 42713 7-24504-42713-1	Gloss Navy 42714 7-24504-42714-8
Gloss Ocean Blue 42715 7-24504-42715-5	Gloss Patriotic Blue 42716 7-24504-42716-2	Gloss Pink Blush 42717 7-24504-42717-0	Gloss Popsicle Orange 42718 7-24504-42718-6	Gloss Purple 42719 7-24504-42719-3	Gloss Red Pepper 42720 7-24504-42720-9	Gloss River Rock 42721 7-24504-42721-6	Gloss Smoke Grey 42723 7-24504-42723-0
Gloss Spring Grass 42724 7-24504-42724-7	Gloss Sunbeam 42725 7-24504-42725-4	Gloss Vintage Grey 42726 7-24504-42726-1	Matte River Rock 42794 7-24504-42794-0	Matte Spanish Moss 42796 7-24504-42796-4	Metallic Aluminum 42766 7-24504-42766-7	Metallic Black Stainless 42790 7-24504-42790-2	Metallic Copper 42768 7-24504-42768-1
Metallic Dark Copper 42767 7-24504-42767-4	Metallic Gold 42770 7-24504-42770-4	Metallic Oil Rubbed Bronze 42771 7-24504-42771-1	Metallic Rose Gold 42700 7-24504-42700-1	Metallic Satin Nickel 42772 7-24504-42772-8	Metallic Silver 42773 7-24504-42773-5	Satin Brick 42733 7-24504-42733-9	Satin White 42753 7-24504-42753-7
Flat Black 42728 7-24504-42728-5	Flat White 42730 7-24504-42730-8	Flat Clear 42729 7-24504-42729-2	Gloss Clear 42705 7-24504-42705-6	Gloss Black 42702 7-24504-42702-5	Gloss White 42727 7-24504-42727-8	Satin Black 42732 7-24504-42732-2	Hammered Black 42782 7-24504-42782-7
Hammered Copper 42786 7-24504-42786-5	Hammered Dark Bronze 42787 7-24504-42787-2	Hammered Silver 42788 7-24504-42788-9	Textured Black 42776 7-24504-42776-6	Textured Granite 42780 7-24504-42780-3	Textured Galaxy 42779 7-24504-42779-7		

KRYLON CAMOUFLAGE MADE WITH FUSION FOR PLASTIC® TECHNOLOGY

- Bonds to most plastics
- No sanding, no priming
- Dries in 15 minutes or less
- Ultra-flat, nonreflective colors
- Also for metal, wood, hard vinyl and more
- Ideal for sporting and hunting equipment, decoys and more

340 g cans — Case pack: 6

Black 44290 7-24504-44290-5	Olive 44293 7-24504-44293-6
Khaki 44291 7-24504-44291-2	Brown 44292 7-24504-44292-9



KRYLON® SPECIALTY

Certain projects demand unique paint formulas. That's when you should demand Krylon special purpose paints. High performing and long lasting, they're formulated for specific applications like grills, wood-burning stoves, outdoor power equipment and more. There isn't a more complete line of products on the market.

KRYLON HIGH HEAT

- Withstands temperatures up to 1,200 °F intermittently; up to 600 °F continuously
- Dries tack-free in 15 minutes or less
- Protects against rust
- Not for use on cooking surfaces

Restores the finish on BBQs, grills and wood-burning stoves and protects against rust. Not for use on kitchen stoves; do not use on areas exposed directly to flames.

340 g cans — Case pack: 6



Black 416070000 7-24504-01994-7	Aluminum 416080000 7-24504-01995-4
---------------------------------------	--

KRYLON APPLIANCE EPOXY

- Durable, scrubbable and colorfast
- Resists household cleaners
- Withstands stains, grease and grime
- Dries to the touch in 30 minutes or less

340 g cans — Case pack: 6

7-24504-43201-2	43201	Appliance White
7-24504-43206-7	43206	Appliance Black



KRYLON CLEAR WOOD FINISHES

- Dries in minutes
- Will not yellow
- Protects surfaces from water and stains

311 G cans — Case pack: 6

7-24504-07001-6	47001	Clear Varnish Gloss
7-24504-07002-3	47002	Clear Varnish Satin
7-24504-07005-4	47005	Clear Polyurethane Gloss



KRYLON LACQUER SPRAY

- Ultra-hard finish
- Fast-dry formula
- Moisture resistant

340 G cans — Case pack: 6

7-24504-97030-9	47030	Gloss Black
7-24504-97032-3	47032	Clear Gloss



KRYLON® FARM AND IMPLEMENT PAINT

The comprehensive line of Krylon Farm and Implement paint has combined the ease and long-lasting quality you trust from Krylon with the durability and protection for your toughest projects. Our original equipment-matched colors are available in a full range of sizes — aerosols, quarts and gallons, with the option for brush-on, spray gun or aerosol applications for a smooth, durable finish on all of your equipment.

This broad line includes excellent coverage, direct-to-metal adhesion, weather guard and rust protection, with fast dry time for a professional-quality finish you can trust. Also available in the line is a reducer to make spray gun application easier and a hardener to add extended protection. For a glossy, anti-rust coating, choose Krylon Farm and Implement paint for small touch-ups, widespread coverage and everything in between.

- Corrosion resistant
- Fast dry
- Direct-to-metal
- VOC compliant
- High-gloss finish

340 g. cans — Case pack: 6; 946 mL — Case pack: 2 units; 3.78 L — Case pack: 4 units



	High Gloss Black	Low Gloss Black	High Gloss White	International Harvester Red	Massey Ferguson Red
AEROSOL:	7-24504-04309-6 41931	7-24504-04311-9 41935	7-24504-04312-6 41937	7-24504-04302-7 41933	7-24504-04308-9 41939
946 mL:	7-24504-04406-2 42020	7-24504-04411-6 42022	7-24504-04407-9 42021	7-24504-04408-6 42024	7-24504-04412-3 42026
3.78 L:	7-24504-04391-1 41962	7-24504-04396-6 41965	7-24504-04392-8 41963	7-24504-04393-5 41964	7-24504-04397-3 41968
	John Deere Green	Ford Blue	John Deere Yellow	New Equipment Cat Yellow	Old Equipment Cat Yellow
AEROSOL:	7-24504-04301-0 41932	7-24504-04306-5 41936	7-24504-04299-0 41934	7-24504-04297-6 41944	7-24504-04303-4 41953
946 mL:	7-24504-04409-3 42023	7-24504-04405-5 42027	7-24504-04410-9 42025	7-24504-04413-0 42037	7-24504-04414-7 42042
3.78 L:	7-24504-04394-2 41966	7-24504-04390-4 41967	7-24504-04395-9 41970	7-24504-04398-0 41974	7-24504-04399-7 41985
	School Bus Yellow	Allis Chalmers Orange	Old Kubota Orange		
AEROSOL:	7-24504-04298-3 41957	7-24504-04304-1 41940	7-24504-04307-2 41946		
946 mL:	7-24504-04436-9 42038	7-24504-04404-8 42030	7-24504-04415-4 42033		
3.78 L:	7-24504-04403-1 41976	7-24504-04389-8 41971	7-24504-04400-0 41978		

FARM AND IMPLEMENT PRIMER

- Increases paint adhesion
- Smooths uneven surfaces
- Ensures true paint color is achieved

340 g cans — Case pack: 6;

946 mL — Case pack: 2 units; 3.78 L — Case pack: 4 units



	Sandable Gray Primer	Sandable Red Oxide Primer
AEROSOL:	7-24504-04313-3 41950	7-24504-04314-0 41951
946 mL:	7-24504-04434-5 42039	7-24504-04435-2 42040
3.78 L:	7-24504-04401-7 41981	7-24504-04402-4 41982

FARM AND IMPLEMENT REDUCER

- Reduces and thins
- Provides optimal spray consistency
- VOC compliant

453 g cans — Case pack: 12 units

7-24504-04437-6
42045
Reducer

FARM AND IMPLEMENT CATALYST ACRYLIC HARDENER

- Accelerates dry time
- Adds extra protection
- Isocyanate-free formula

226 g. cans — Case pack: 12 units

7-24504-04438-3
42046
Catalyst Hardener

KRYLON® CHALKBOARD PAINT

- Creates a smooth, slate-like chalkboard finish
- Durable, long-lasting, writable, erasable finish
- Easy application

340 g. cans — Case pack: 6

Blue 401804 7-24504-03995-2	Black 40807 7-24504-40807-9
-----------------------------------	-----------------------------------



KRYLON METALLIC PAINT

Create metallic accents that dry quickly to a brilliant shine with Metallic spray paint.

- Dries quickly
- Easy to use
- Brilliant, metallic-like finish

Ideal for use on fences, trash cans, gutters and downspouts, storm windows and doors, metal roofs and heating ducts.

Silver & Dull Aluminum: 311 g cans — Case pack: 6
All other colors: 340 g. cans — Case pack: 6

Silver 41406 7-24504-41406-3	Copper 42203 7-24504-42203-7
Dull Aluminum 41403 7-24504-51403-9	Brass 42204 7-24504-42204-4
Gold 41706 7-24504-41706-4	



KRYLON FLUORESCENT PAINT

- Bold, neon colors for high visibility
- For safety and décor items
- Increases brilliance up to 400%
- Glows under ultraviolet (black) light
- For best results, use a white basecoat

311 g. cans — Case pack: 6

Red-Orange 43101 7-24504-43101-5	Yellow-Orange 43102 7-24504-43102-2
--	---



KRYLON SNAP & SPRAY GUN

- Transforms any spray can into a spray gun
- Exclusive Full Grip Trigger eliminates finger fatigue
- Improves accuracy and control

Case pack: 12

Snap & Spray Gun
K07091
7-24504-03342-4



KRYLON® SOLVENT-BASED MARKING PAINTS

APWA White 458490000 7-24504-45849-4	APWA Safety Yellow 458500000 7-24504-45850-0	APWA Red 458510000 7-24504-45851-7
APWA Blue 458820000 7-24504-45882-1	APWA Green 458520000 7-24504-45852-4	Fluorescent Orange 458540000 7-24504-45854-8

KRYLON WATER-BASED MARKING PAINTS

Fluorescent Orange 458530000 7-24504-45853-1	Fluorescent Safety Red 458660000 7-24504-45866-1
--	--

KRYLON PROFESSIONAL MARKING PAINT

- Use to identify utilities or surfaces to dig
- Bright, bold colors
- Spray upside down

KRYLON SOLVENT-BASED MARKING PAINT

482 g. cans — Case pack: 6

KRYLON WATER-BASED MARKING PAINT

482 g. cans — Case pack: 6



KRYLON MARKING EQUIPMENT

- 7-24504-07095-5 K07095 Spotter Handheld Marking Wand (12" length)
- 7-24504-07096-2 K07096 Wheeler Handheld Wand (34" length)



KRYLON PROFESSIONAL STRIPING PAINT AND EQUIPMENT

- Long-lasting durability on many surfaces
- Crisp, clean lines
- Nonclogging spray tip

KRYLON SOLVENT-BASED STRIPING PAINT

610 g. cans — Case pack: 6

SOLVENT-BASED

SB Highway White 458860000 7-24504-45886-9	SB Handicap Blue 458620000 7-24504-45862-3	SB Highway Yellow 458610000 7-24504-48861-6
--	--	---

WATER-BASED

Athletic Field White 458600000 7-24504-45860-9
--



KRYLON PROFESSIONAL STRIPING EQUIPMENT

- 7-24504-18130-9 5899 Stripping Machine
- 7-24504-08360-3 8360 Stripping Wand



